

Every anesthetic patient is carefully monitored with the following equipment:

**Pre-Anesthetic Blood Work** Evaluates organ function, hydration, and screens for infection.

**IV Catheter and Fluids** Gives us a direct access to a vein if medication is needed quickly. The fluids help with blood pressure, hydration, and organ function.

**Pulse Oximetry (SpO<sub>2</sub>)** Measures the level of oxygen in the blood and gives a pulse rate. Oxygen levels for dogs and cats should be 95-100%.

**Electrocardiogram (ECG)** Monitors for an irregular heart rhythm and gives a heart rate.

**Blood Pressure (BP)** Every 2 minutes measures the systolic and diastolic blood pressures. Normal BP for a cat is 125/85; and for a dog it is 135/80.

**Capnography (EtCO<sub>2</sub>)** Measures the amount of carbon dioxide (CO<sub>2</sub>) that the patient is exhaling.

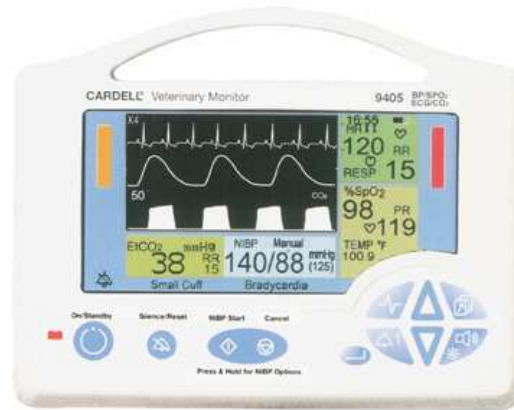
**Temperature** Constant monitoring of the patient's temperature is done throughout the dentistry. Patients under anesthesia are not able to regulate their own body temperature. We use supplemental heat to regulate body temperature.

**Respiratory Rate** Measures how many breaths the patient takes each minute.

**Circulating Water Pad** A pad that lies under the patient and circulates warm water. This helps maintain normal body temperature.

**Bair Hugger** Blows warm air through a specially made towel that lies over top of the patient. This helps maintain normal body temperature.

Below is the monitor we use during our dental procedures.



## Post Procedure Care

**Intensive Care Unit (ICU)** After the procedure the patient is put in our ICU. The top level of the ICU circulates warm air over the patient and the bottom level of the ICU produces floor heat. This helps our patients have a nice warm recovery.

**Temperature** Every 30-60 minutes a temperature is taken until the patient can maintain a normal body temperature on their own.

**Pain Medication** Pain medications are given in hospital as needed and sent home when indicated.

**Follow-Up** Two weeks after the dental procedure the veterinarian does an exam to make sure the mouth is healing properly. At this time we also do a demonstration on home dental care such as brushing teeth.

## Professional Oral Health Evaluation and Dental Cleaning



Before Professional Cleaning



After Professional Cleaning

*Our single focus is your companion's health care*



**Kimberly Crest  
Veterinary Hospital**

1423 E. Kimberly Road  
Davenport, IA 52807  
563-386-1445

[www.kimberlycrestvet.com](http://www.kimberlycrestvet.com)



**AAHA Accredited**  
The Standard of Veterinary  
Excellence

Most people understand that daily care of our teeth and gums is important for a healthy body. What you may not realize is that the same is true for our pets. Over 80% of dogs and 70% of cats over 4 years old suffer from periodontal disease, a condition in which bacteria attack the gums. As plaque builds up on the teeth, the bacteria irritate the gums, causing them to become red, swollen and painful. Eventually the inflamed gums pull away from the teeth creating pockets that trap more bacteria. The pockets deepen and bacteria begin to attack the roots of the teeth and the bone of the jaw. With enough bone loss around the roots, teeth become loose, painful and eventually fall out. The gums can bleed every time the pet eats and bacteria then enters the blood stream, which may increase the risk for kidney and heart disease.

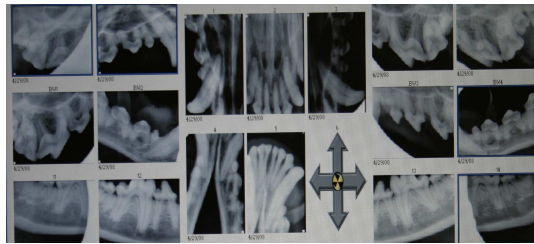
**Dental disease can become grave enough to cause life-threatening problems.**



*The image above presents severe periodontal disease that not only causes extreme bad breath and pain, but also endangers the life of the pet*

Kimberly Crest Veterinary Hospital will perform a complete oral health evaluation and cleaning which will include the following:

- **Full Mouth Radiographs** X-rays are taken to evaluate the teeth above and below the gum line.
- **Evaluation by the Veterinarian** The doctor evaluates the radiographs and each individual tooth. The Certified Veterinary Technician charts the doctor's findings on an easy to interpret chart that is then sent home.



*The images above are full mouth radiographs of a dog*



*Above: cat radiographs- the lower left image shows normal mandibular premolars and molar while the lower right image shows a hole in the molar which indicates the tooth needs extracted*

- **Phone Call** The veterinarian calls you with an update and treatment plan if any additional procedures are warranted. This would include extractions, tooth saving procedures, dental implants, etc.

- **Complete Teeth Cleaning** This procedure starts with removal of the larger deposits of calculus build up. An ultrasonic scaler is then used; this instrument vibrates very quickly and removes the smaller deposits of calculus on the surface of the tooth. Hand instruments are then used to remove calculus build up from below the gum line.
- **Polishing** An air-powered polisher is used to remove any plaque that may have been missed and to smooth out any imperfections on the tooth surface.
- **OraVet** This is applied to every tooth, it is a wax-like barrier sealant that helps seal the gum line after a cleaning and protect teeth and gums from plaque and calculus buildup. *A kit is also available for weekly application of this product at home.*
- **Fluoride Treatment** Is applied to teeth to slow the reattachment of plaque to the teeth.



Above is a Certified Veterinary Technician using an ultrasonic scaler to clean the teeth.

Please ask one of our veterinarians for a treatment plan based on your pet's dental needs.

